

June 2002

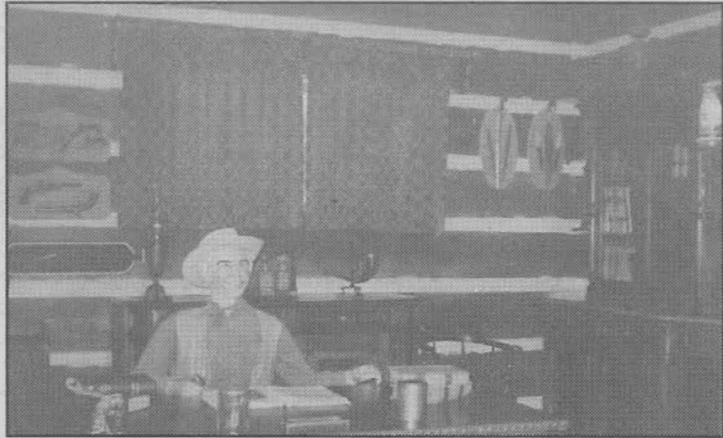


# COWBOY UP!

## Ponderosa Ranch

by Chelley Kitzmiller

Return to yesteryear, when Ben Cartwright and his sons rode the wooded trails from North Lake Tahoe to Virginia City to buy supplies and play a little poker.



together.

Inevitably, trouble would find one or all of them. But the 500 million viewers who tuned in each week for fourteen full seasons (430 episodes) weren't worried; they knew the Cartwrights would persevere because they were a family who stuck



Look Closely at the sign on the side of the car..

Though much of the filming was done on location in Tahoe, the Ponderosa was nothing but a set on a Paramount Studio sound stage. Tahoe entrepreneurs, Bill and Joyce Anderson, saw thousands of "Bonanza" fans come looking for "The World's Most Famous Ranch" only to discover it didn't exist. Then in 1967, Anderson, together with NBC officials and "Bonanza's" principals built the Ponderosa Ranch.

Today, visitors to Tahoe can relive the legend of the Cartwright clan at the Ponderosa Ranch Studio and Theme Park. An old west town, complete with charcoal led "Hossburgers", a petting farm, and a Mystery Mine, offers a day of family fun. Stunt men, trick ropers,

and fast draw artists perform hourly. A tour of the Cartwright's log home begins in Hop Sing's kitchen and goes into the formal dining room where the table is set for Ben and his boys. The living room's massive stone fireplace, Victorian sofa, red leather chairs, and spiral staircase bring back fond memories of family gatherings, weddings, and many an important visitor. In the adjoining office, a model of Ben sits at a heavy wooden desk beneath a map

of the Ponderosa, the same map that signaled the beginning of the hour long show by bursting into a fiery blaze.



# BILL

